



The Belltown Antique Car Club

Presents the 56th Annual

Belltown Vintage Motorcar Meet

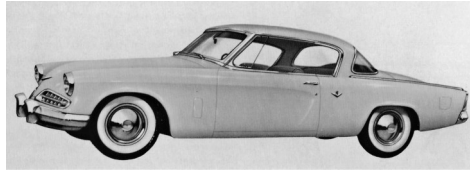
Haddam Neck Fair Grounds, Haddam Neck, CT

Sunday, August 6, 2023

Gates open at 8 a.m.

Show car registration
closes at 11am

Judging begins at noon



Show cars: \$10 (incls.
driver & passengers)

Spectators: \$5 (children
under 12 free with
accompanying adult)

*A celebration of stock, unmodified antique cars & trucks,
40 years old or older (thru 1983)*

Special Featured Marque this year:

Studebaker all years (free admission)

Bring your antique car or truck and enjoy the day!

Rain or shine, field conditions permitting

Refreshments & food available on the field

Please, no bicycles or pets or unaccompanied children

www.belltownantiquecarclub.org

Directions, Entry Fees & Show Classes on the back of this flyer

Directions to Belltown Vintage Motorcar Meet at Haddam Neck Fairgrounds

Note to GPS users:

You must use East Hampton's ZIP Code 06424. (Using Haddam's ZIP Code will take you across the CT River to the west side, 20 miles away!)

Google Maps: 41° 30 44.75 N and 72° 30 56.21 W

From the **Middletown-Portland Arrigoni Bridge**: Follow Route 66 East for 5.5 miles to the intersection of Route 151 South.

- Follow Rt 151 South for 3.4 miles to the intersection of Haddam Neck Road on the right.
- Follow Haddam Neck Road for 1 mile to the Fairgrounds on your left.

From the **East Haddam Swing Bridge**: Take an immediate left onto Route 149 North.

- Follow Route 149 for 3.3 miles to the intersection of Route 151 North.
- Follow Route 151 for 4.3 miles to the intersection of Haddam Neck Road on the Left.
- Follow Haddam Neck Road for 1 mile to the Fairgrounds on your left.

Entry Fees

Show Car Registration: \$10 (incls. driver & passengers), except featured marque (free)

Flea Market Vendors: \$25 per 20'x20' space Car Corral: \$20 per vehicle for sale

Spectators: \$5 (children under 12 free, with adult)

17 Show Classes for Vehicles at Least 40 Years Old (thru 1983)

16 Judged Classes, Three Trophies Per Class, plus 1m Display-Only (not judged)

Note: **Minimum eligibility for First Place trophy is 70 points**

Judged Classes

A Early Cars, -1931, except Model A & Full Classics	I Cars, 1949 - 1954
B 1928-31 Ford Model A, all non-truck	J Cars, 1955 - 1960
C Featured Marque (Studebaker)	K Cars, 1961 - 1965
D Full Classics, 1915-1948	L Cars, 1966 - 1968
E Early Cars, 1932-1948, except Full Classics	M Cars, 1969 - 1970
F Early Trucks, -1948 (up to 2 ton)	N Cars, 1971 - 1983
G Trucks, 1949-1970 (up to 2 ton)	O Sports cars, Post-War, -1964
H Trucks, 1971-1983 (up to 2 ton)	P Sports cars, 1965-1983

X Display Only, Modified, Non-Stock Vehicles and Unclassified Vehicles - includes hot rods, street rods, customized vehicles, dune buggies, Neo-Classics, re-creations, replica kit cars, tributes/clones, stock cars not wanted to be parked in class, and late arriving entrants (not in the registration lane by 11:00 a.m.)

For More Info, Call: Peter Christianson , 860-510-3340 or Email: belltowncarclub@gmail.com